



**ELECTROMECHANICAL
RESEARCH LABORATORIES, INC.**

P.O. BOX 1026, NEW ALBANY, IN 47181

DATE

5/5/03

DRAWN

D. URBAN

PART NAME

Flow Curve, 1.5 PSI, Pressure

APPROVED

UNIT NAME
Marine 6" PV (MD II)

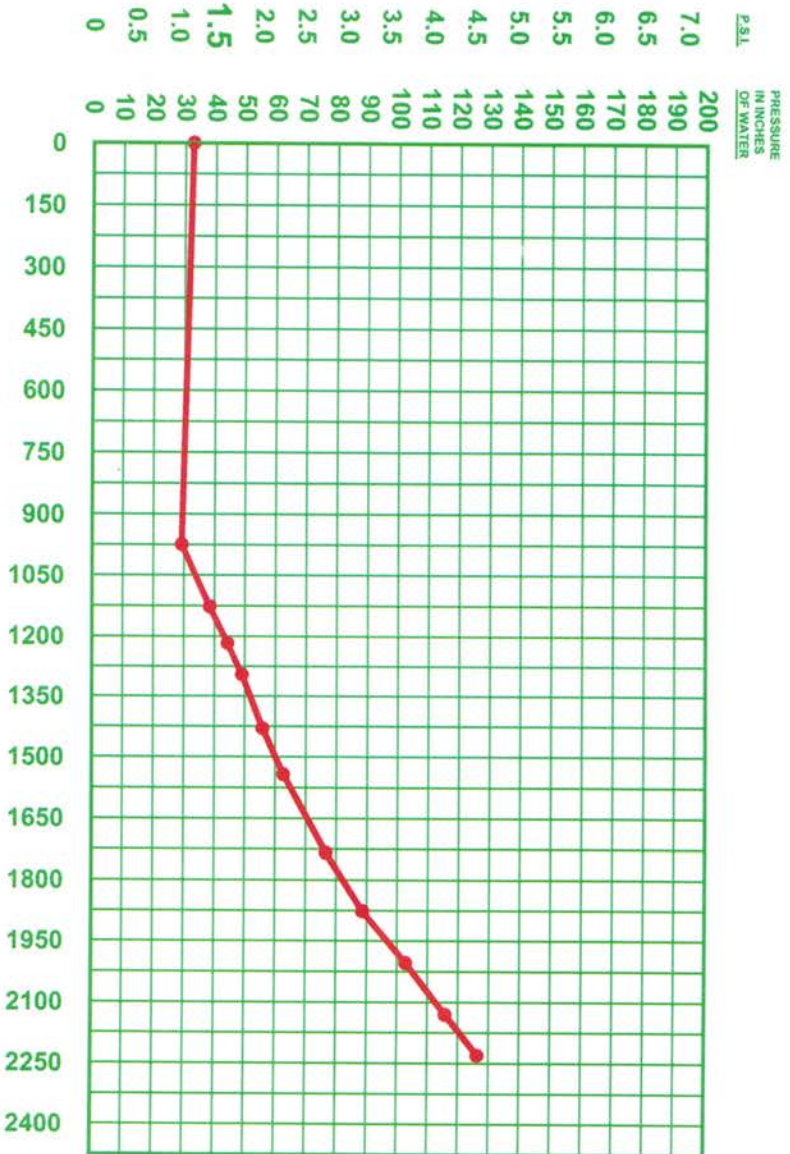
TOLERANCE:
0.0 = +/- 0.020
0.00 = +/- 0.015
0.000 = +/- 0.005

SCALE

JOB NO.

DWG. NO.
1250125B

ITEM NO.



FLOW IN FT³/MIN.

BARRELS PER HOUR	FLOW FT ³ /MIN.	PRESSURE IN. OF H ₂ O
10418	974	29.2
12054	1127	38.6
13017	1217	44.2
13862	1296	49.0
15295	1430	55.8
16493	1542	62.6
18547	1734	76.6
20066	1876	88.5
21435	2004	102.8
22783	2130	115.8
23852	2230	126.3

BARRELS PER HOUR	FLOW FT ³ /MIN.	PRESSURE IN. OF H ₂ O
10418	974	29.2
12054	1127	38.6
13017	1217	44.2
13862	1296	49.0
15295	1430	55.8
16493	1542	62.6
18547	1734	76.6
20066	1876	88.5
21435	2004	102.8
22783	2130	115.8
23852	2230	126.3

**Curve for Pressure Side
6" PV Valve - 1.5 PSI**
data based on air flow



**ELECTROMECHANICAL
RESEARCH LABORATORIES, INC.**

P.O. BOX 1026, NEW ALBANY, IN 47181

DATE

11/28/01

DRAWN

D. URBAN

PART NAME

Flow Curve, 0.5 PSI, Vacuum

APPROVED

SCALE

JOB NO.

UNIT NAME

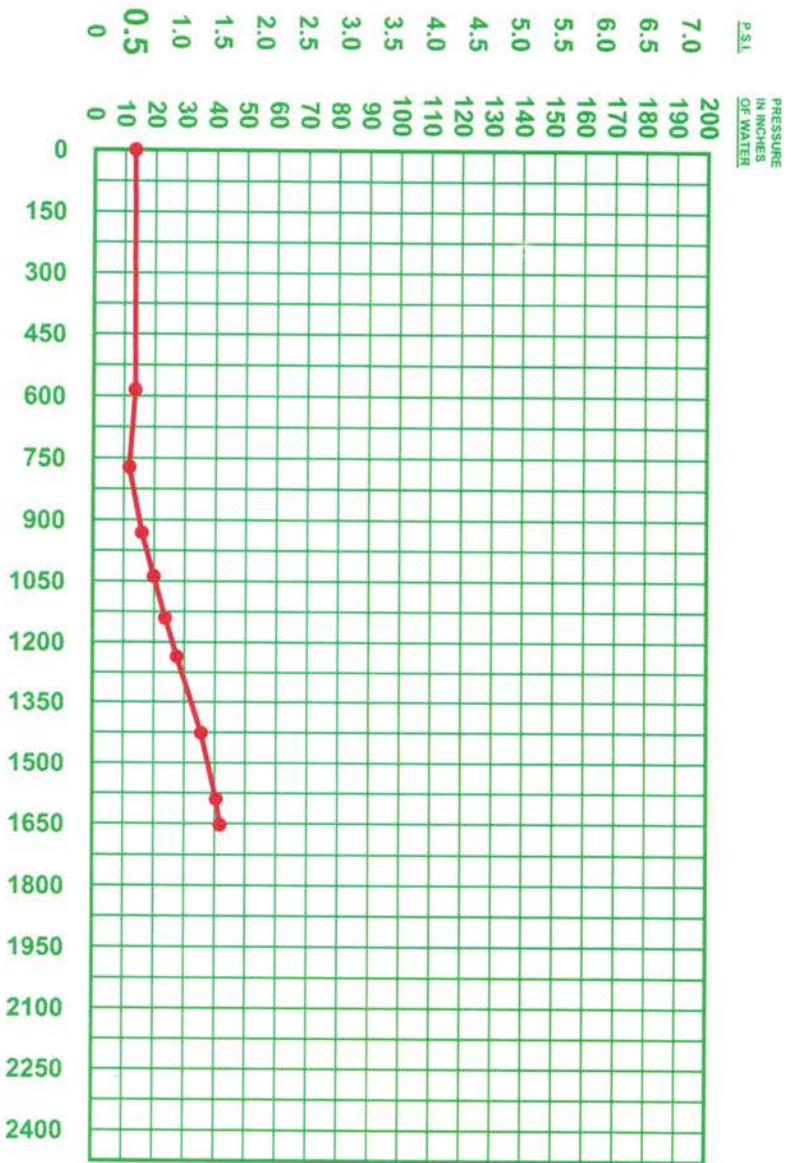
Marine 6" PV (MD II)

DWG. NO.

332M075B

ITEM NO.

TOLERANCE:
0.0 = +/- 0.030
0.00 = +/- 0.015
0.000 = +/- 0.005



BARRELS PER HOUR	FLOW FT.³/MIN.	PRESSURE IN. OF H ₂ O
6260	585	13.6
8256	772	11.8
9958	931	16.0
11100	1038	19.9
12197	1141	23.7
13207	1235	27.5
15252	1426	35.5
17003	1590	40.4
17674	1653	41.7

BARRELS PER HOUR	FLOW FT.³/MIN.	PRESSURE IN. OF H ₂ O
6260	585	13.6
8256	772	11.8
9958	931	16.0
11100	1038	19.9
12197	1141	23.7
13207	1235	27.5
15252	1426	35.5
17003	1590	40.4
17674	1653	41.7

**Curve for Vacuum Side
6" PV Valve - 0.5 PSI**
data based on air flow