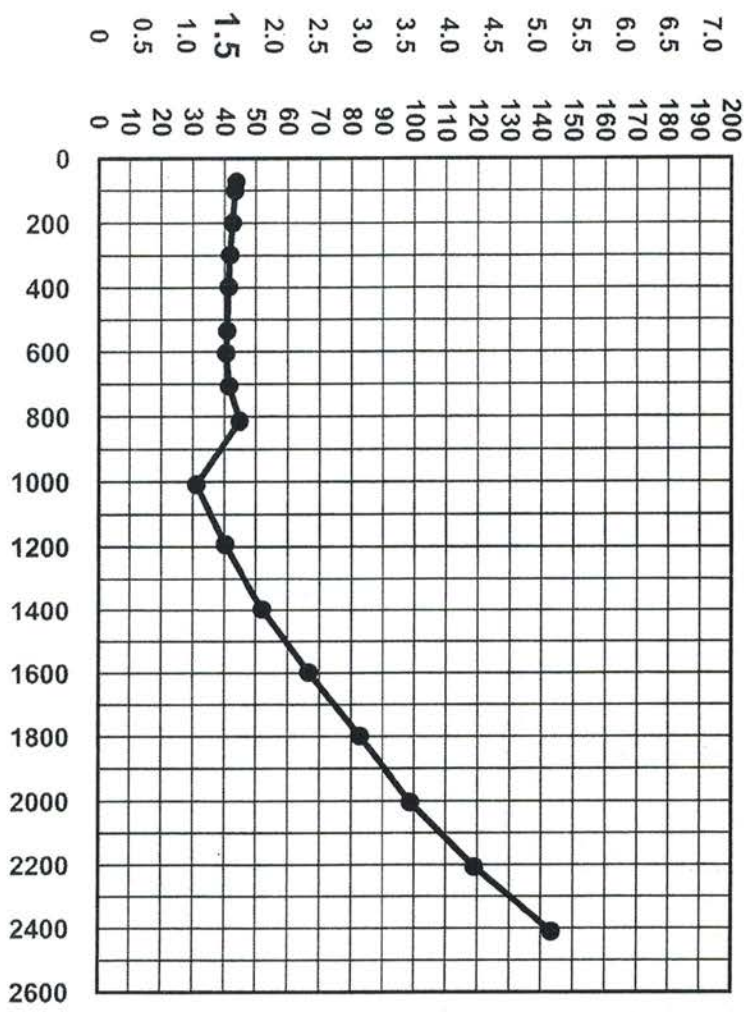


PSI  
PRESSURE  
IN INCHES  
OF WATER



FLOW IN FT.<sup>3</sup> / MIN.

Curve for PRESSURE side of 6" PV Valve - 1.5 PSI

**CEESI - Colorado Engineering**

data based on air flow

| Barrels Per Hour | Flow FT. <sup>3</sup> per Min. | Pressure In. of H <sub>2</sub> O |
|------------------|--------------------------------|----------------------------------|
| 781              | 73                             | 43.70                            |
| 1070             | 100                            | 43.23                            |
| 2129             | 199                            | 42.46                            |
| 3189             | 298                            | 41.71                            |
| 4248             | 397                            | 41.24                            |
| 5725             | 535                            | 40.76                            |
| 6463             | 604                            | 40.51                            |
| 7554             | 706                            | 41.40                            |
| 8710             | 814                            | 44.76                            |
| 10796            | 1009                           | 31.09                            |
| 12765            | 1193                           | 40.15                            |
| 14948            | 1397                           | 51.94                            |
| 17099            | 1598                           | 66.58                            |
| 19249            | 1799                           | 82.64                            |
| 21443            | 2004                           | 98.75                            |
| 23615            | 2207                           | 118.99                           |
| 25798            | 2411                           | 143.23                           |

|       |      |        |
|-------|------|--------|
| 781   | 73   | 43.70  |
| 1070  | 100  | 43.23  |
| 2129  | 199  | 42.46  |
| 3189  | 298  | 41.71  |
| 4248  | 397  | 41.24  |
| 5725  | 535  | 40.76  |
| 6463  | 604  | 40.51  |
| 7554  | 706  | 41.40  |
| 8710  | 814  | 44.76  |
| 10796 | 1009 | 31.09  |
| 12765 | 1193 | 40.15  |
| 14948 | 1397 | 51.94  |
| 17099 | 1598 | 66.58  |
| 19249 | 1799 | 82.64  |
| 21443 | 2004 | 98.75  |
| 23615 | 2207 | 118.99 |
| 25798 | 2411 | 143.23 |



**ELECTROMECHANICAL  
RESEARCH LABORATORIES, INC.**  
P.O. 1026 NEW ALBANY, IN 47150

|            |   |          |          |             |                             |
|------------|---|----------|----------|-------------|-----------------------------|
| DATE       | 6/30/09   | DRAWN    | D. URBAN | PART NAME   | Flow Curve 1.5 PSI Pressure |
| TOLERANCES | .0= +/- .030<br>.00= +/- .015<br>.000= +/- .005 | APPROVED |          | UNIT NAME   | 6" PV Valve MDII            |
| SCALE      |   | JOB NO.  |          | DRAWING NO. | 180U172B                    |
|            |   |          |          | ITEM NO.    |                             |